



RC4: Day 7

ANTHONY SALVAGNO

 [READ REVIEWS](#)

 [WRITE A REVIEW](#)

CORRESPONDENCE:

asalvagn@unm.edu

DATE RECEIVED:

June 10, 2015

DOI:

10.15200/winn.142722.24376

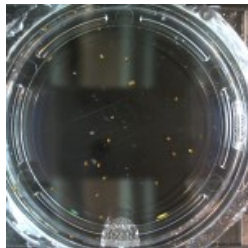
ARCHIVED:

March 24, 2015

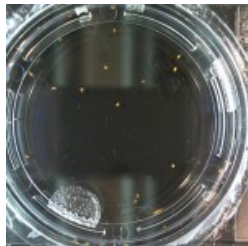
CITATION:

Anthony Salvagno, RC4: Day 7, *The Winnower*
2:e142722.24376 , 2015 , DOI:
[10.15200/winn.142722.24376](https://doi.org/10.15200/winn.142722.24376)

© Salvagno This article is distributed under the terms of the [Creative Commons Attribution 4.0 International License](#), which permits unrestricted use, distribution, and redistribution in any medium, provided that the original author and source are credited.



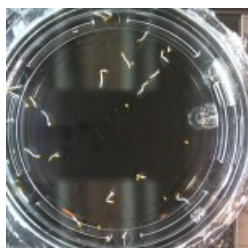
VG 99% D2O



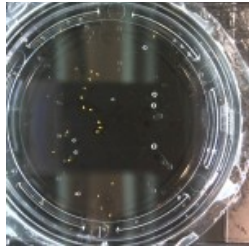
VG 66% D2O



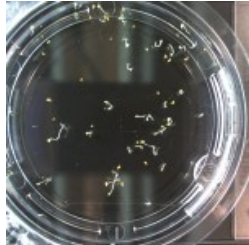
VG, 33% D2O



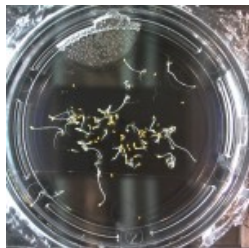
VG, DI



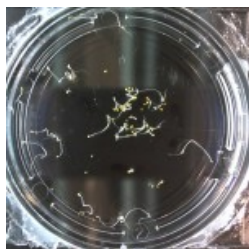
CA, 99% D2O



CA, 66% D2O



CA, 33% D2O



CA DI

I'd like to make it known that counting the arabidopsis seeds is next to impossible. The first seeds to germinate have grown so quickly that there is a mix of seeds that have shed their seed coat and seeds that have yet to germinate. This makes it impossible to count with any accuracy. I'm trying to tell if there is a difference in color between seeds that are germinating (or yet to germinate) and seeds that are no longer holding any plant material.

My guess is that darker browns indicated no plant material and light browns are germinating seeds. That is just a guess though. In the next trial I will have to do a small number of arabidopsis per sample (maybe less than 20).