



Typical Specimen for the Repeating Crumley Experiment

ANTHONY SALVAGNO

READ REVIEWS

WRITE A REVIEW

CORRESPONDENCE:

asalvagn@unm.edu

DATE RECEIVED:

June 10, 2015

DOI:

10.15200/winn.142721.16402

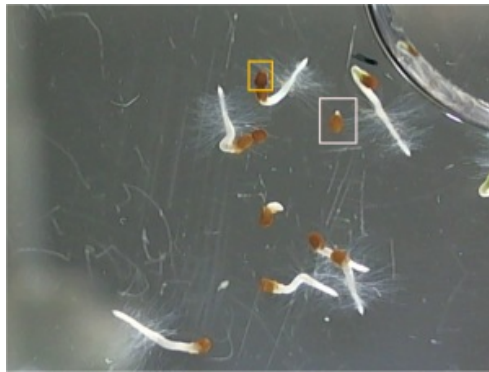
ARCHIVED:

March 24, 2015

CITATION:

Anthony Salvagno, Typical Specimen for the Repeating Crumley Experiment, *The Winnower* 2:e142721.16402, 2015, DOI: [10.15200/winn.142721.16402](https://doi.org/10.15200/winn.142721.16402)

© Salvagno This article is distributed under the terms of the [Creative Commons Attribution 4.0 International License](https://creativecommons.org/licenses/by/4.0/), which permits unrestricted use, distribution, and redistribution in any medium, provided that the original author and source are credited.



TYPICAL EXAMPLES, OF NO GERMINATION, BEGINNING GERMINATION, OBVIOUS GERMINATION, ETC

Bill Hooker suggested (and rightly so!) that I document what I consider to be typical specimens. I found, today that the zoom feature on the webcam I'm using is quite sufficient for getting close enough to demonstrate this and so I snapped a picture and tried to document. Powerpoint messed me up a little bit, but this is good enough.

The orange box is highlighting a seed that is showing no signs of germination. From my studies I've found that the seed coat becomes slightly transparent just before radicle (the pre root) penetration and you can see the precursor to puncture. The seed coat usually gets lighter too and in this case is really dark in color.

The pink box (hehe) is what I would count as germination when I'm counting the seeds. I see the tip of the radicle penetrating the seed coat and so germination is officially underway.

In the very near dead center of the image is a seed that has what I referred to in an earlier post as an extended radicle. Basically I meant that the radicle was pushed through and the root is now forming. The root will continue to grow until the seed coat has come off, which over to the right it has (there is a green leaf that is cropped on the edge of the image).

The end.