

Supporting Information for “A comparison of regional climate projections with a range of climate sensitivities”

Clair R. Barnes^{1,2}, Richard E. Chandler¹ and Christopher M. Brierley³

¹Department of Statistical Science, University College London, Gower Street, London WC1E 6BT

²Grantham Institute, Imperial College London, Exhibition Road, London SW7 2AZ

³Department of Geography, University College London, Gower Street, London WC1E 6BT

Contents of this file

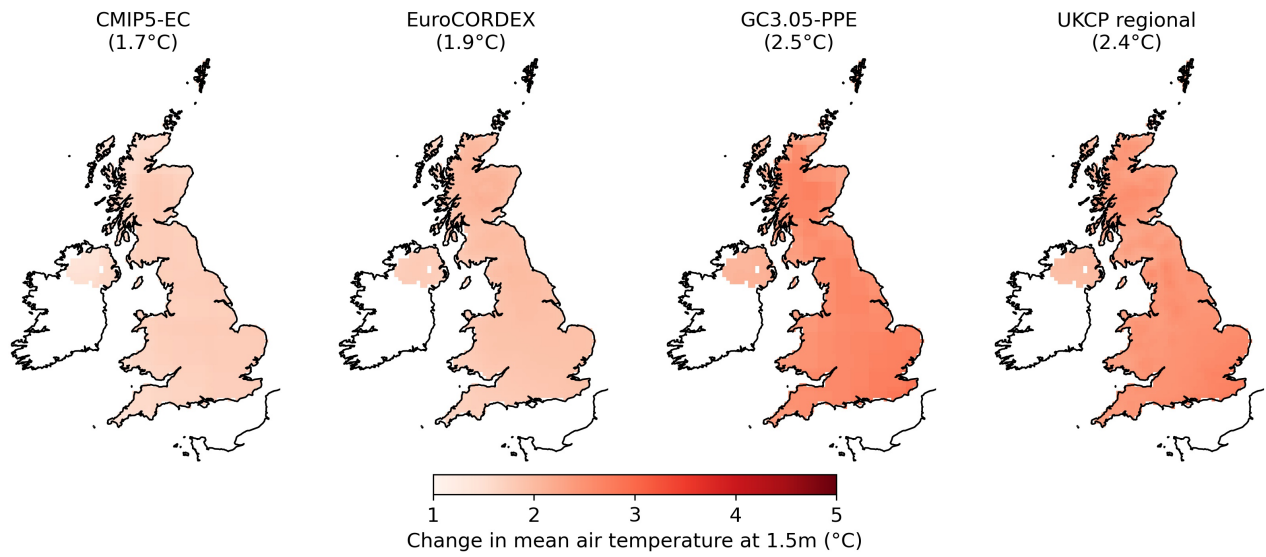
1. Figures S1 to S7

Introduction This file contains additional plots which are briefly referred to in the main text, but which do not form part of the main analysis. Similar plots for additional variables, seasons and comparisons can be found at <https://github-pages.ucl.ac.uk/EuroCORDEX-UK-plot-explorer/> (Barnes et al., 2023).

References

Barnes, C., Alegre, R., Ho-Lyn, A., Quinn, J., Chandler, R., & Brierley, C. (2023, August). *EuroCORDEX-UK plot explorer*. Retrieved from <https://github-pages.ucl.ac.uk/EuroCORDEX-UK-plot-explorer/>

(a) Ensemble mean change in winter temperatures



(b) Ensemble mean change in summer temperatures

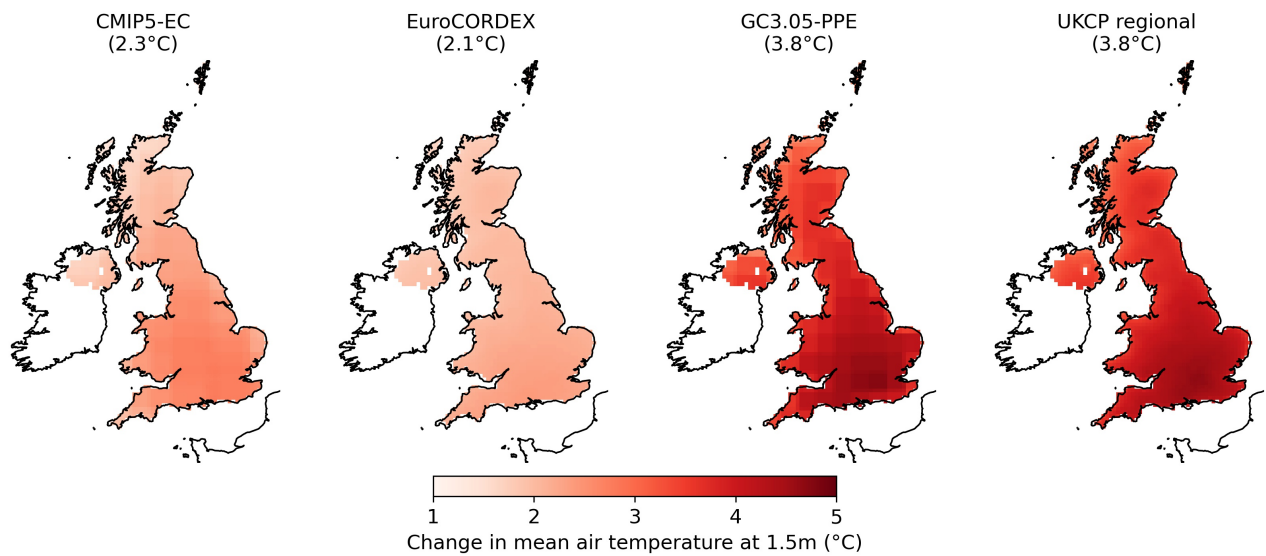


Figure S1. Maps of the mean change in daily mean (a) winter and (b) summer temperatures in each ensemble between the reference period (1981—2010) and the future period (2050—2079), with the average change over the UK land surface given in parentheses.

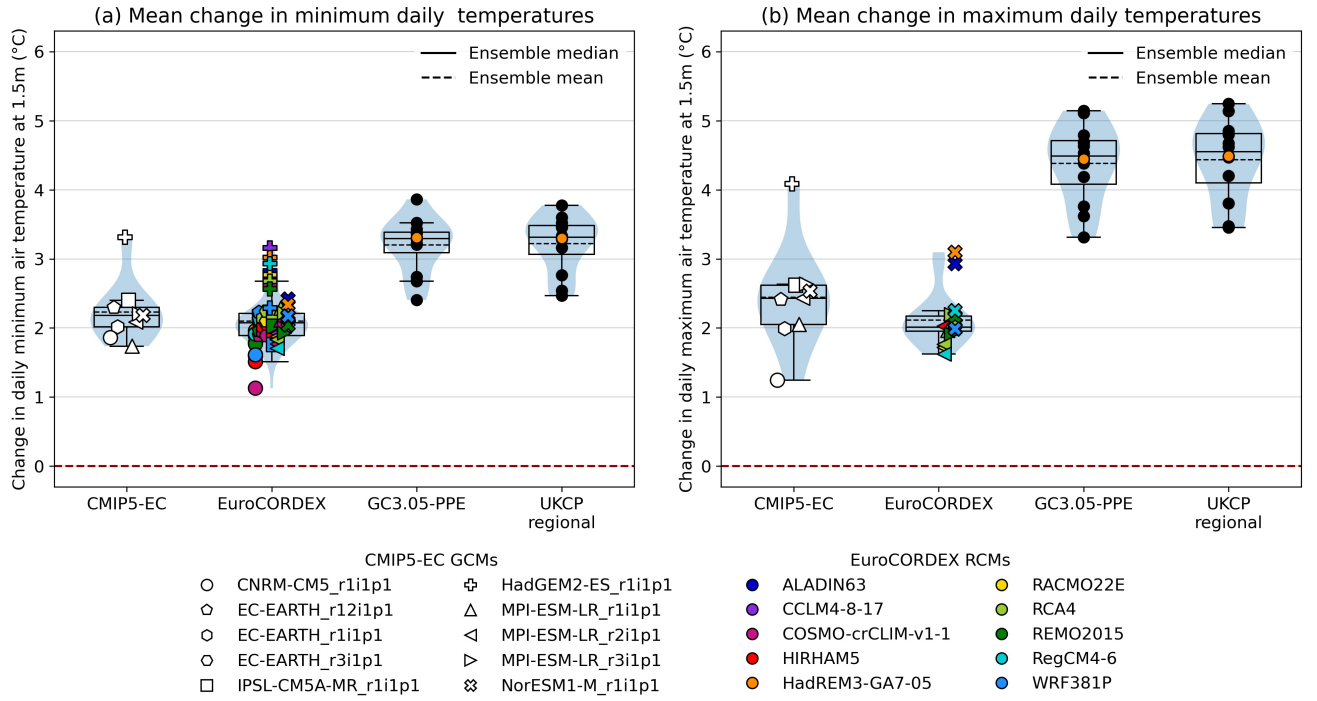


Figure S2. Boxplots showing the distribution of average change in daily changes in (a) minimum and (b) maximum temperatures over the UK land surface during the summer months between the reference period (1981—2010) and the future period (2050—2079). For details of the plot elements see the caption to Figure 4 in the main text.

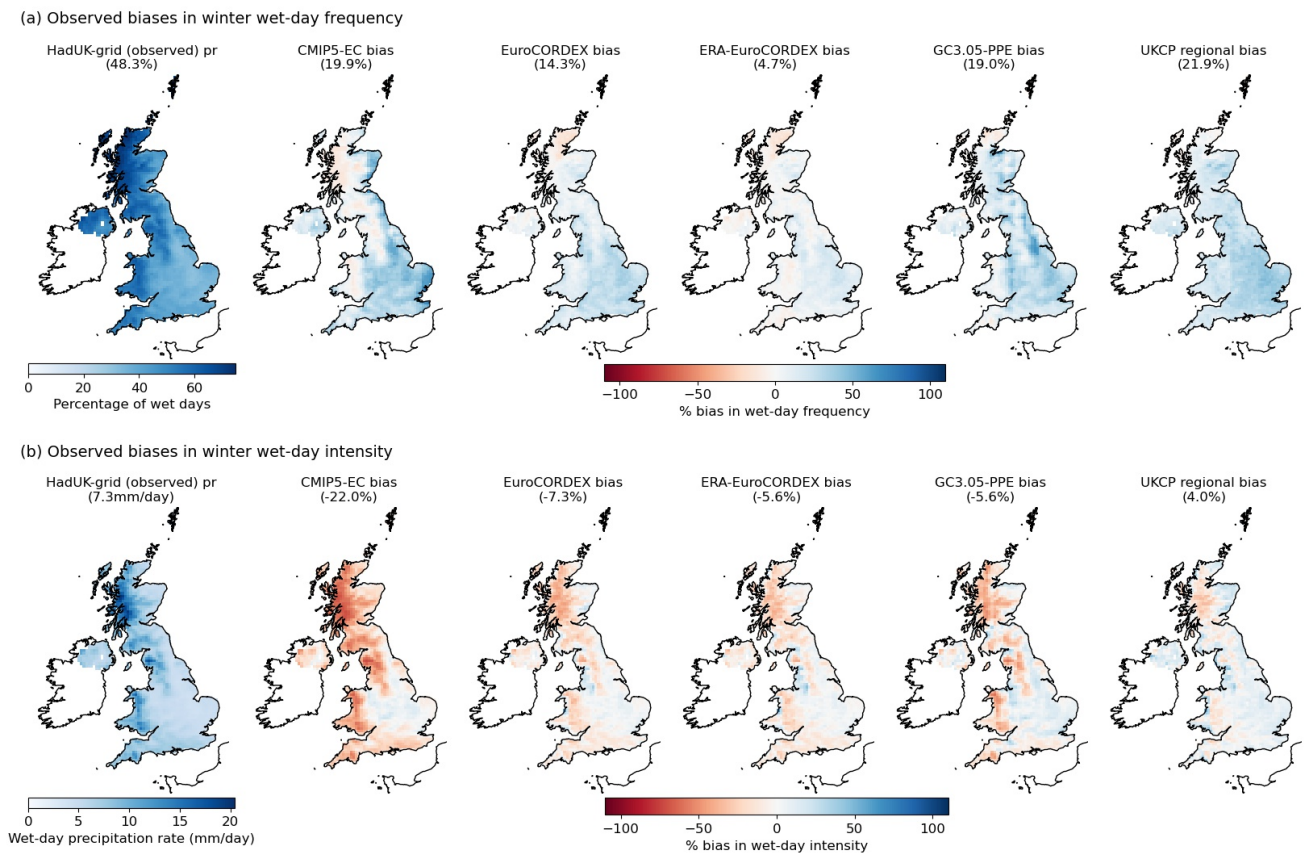
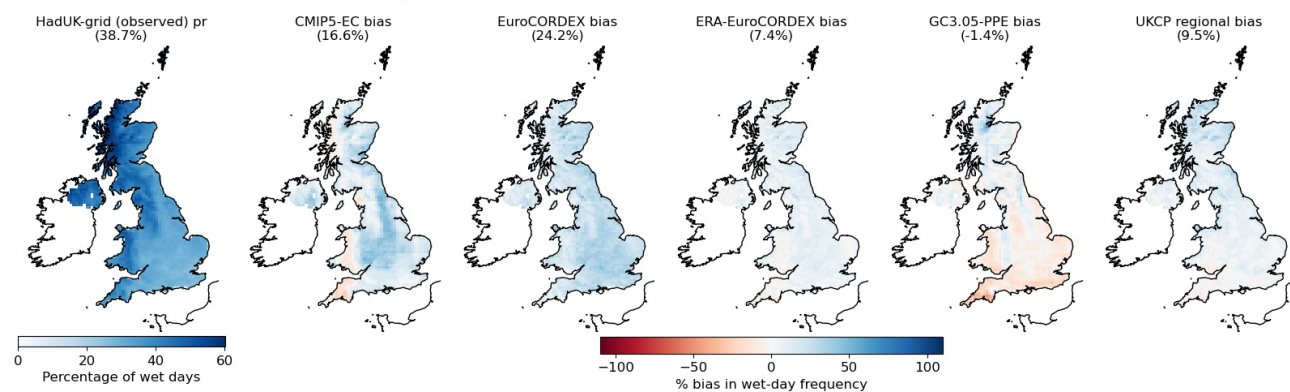


Figure S3. Maps of the mean relative bias in (a) frequency of wet days and (b) rate of precipitation on wet days in each during the winter months between the reference period (1981—2010) and the future period (2050—2079), with the average bias over the UK land surface given in parentheses.

(a) Observed biases in summer wet-day frequency



(b) Observed biases in summer wet-day intensity

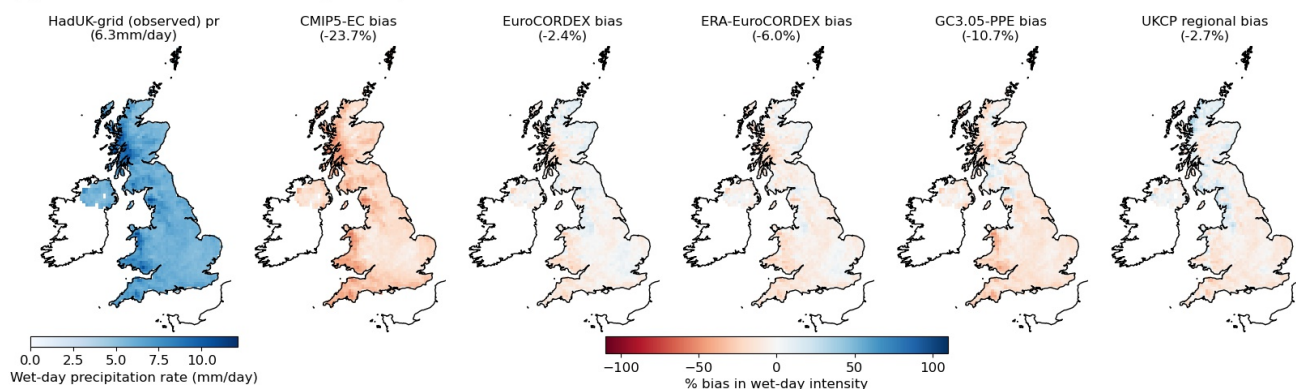
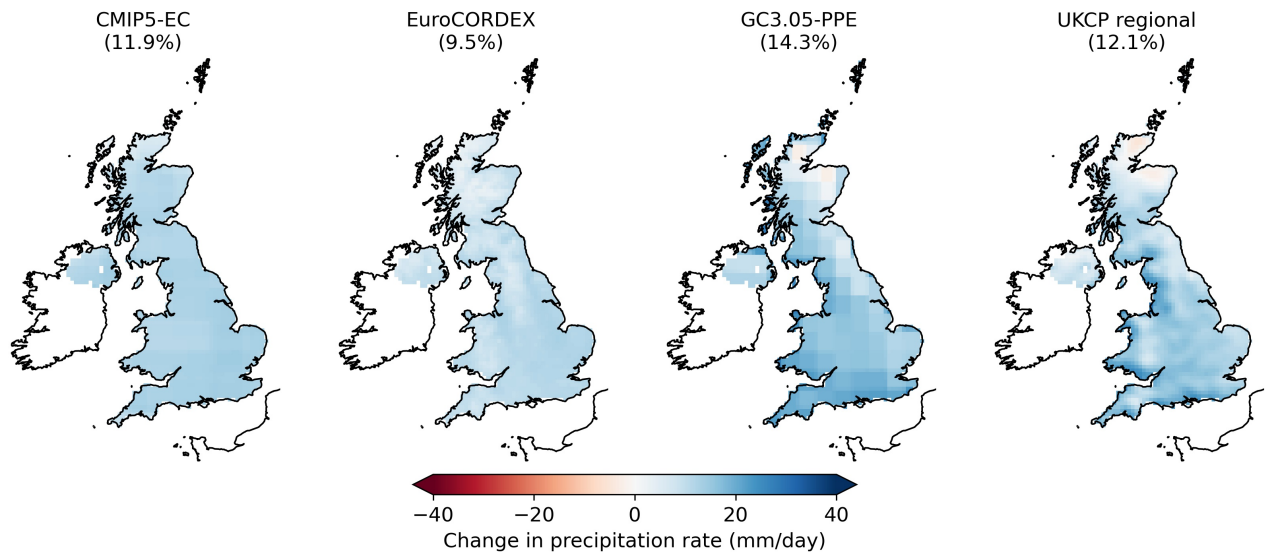


Figure S4. Maps of the mean relative bias in (a) frequency of wet days and (b) rate of precipitation on wet days in each during the summer months between the reference period (1981—2010) and the future period (2050—2079), with the average bias over the UK land surface given in parentheses.

(a) Ensemble mean change in winter precipitation



(b) Ensemble mean change in summer precipitation

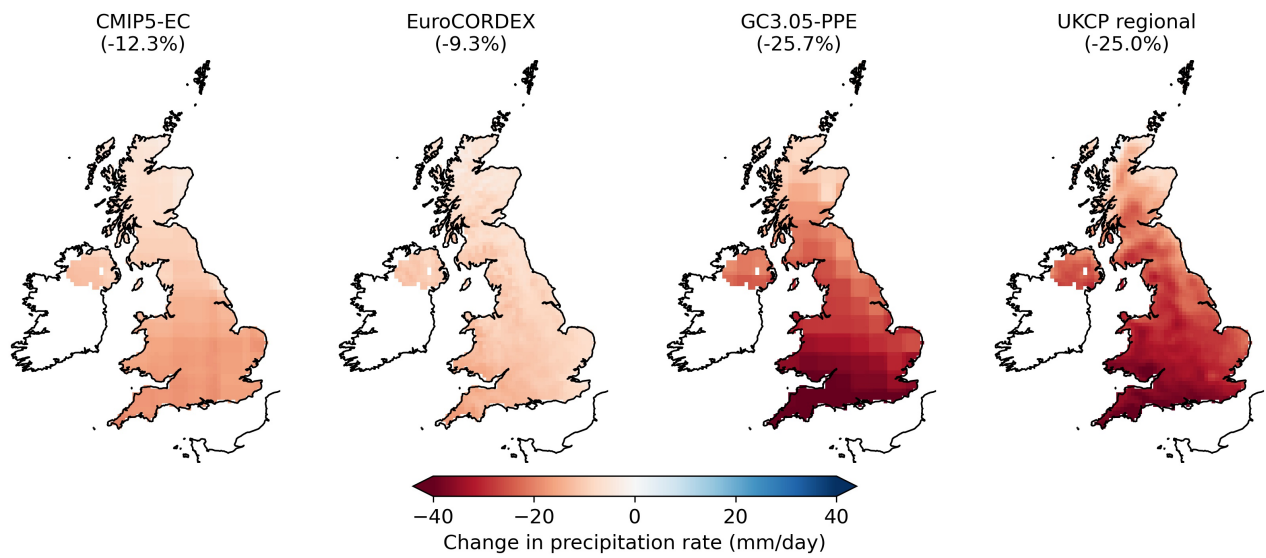


Figure S5. Maps of the mean relative change in daily (a) winter and (b) summer precipitation in each ensemble between the reference period (1981—2010) and the future period (2050—2079), with the average change over the UK land surface given in parentheses.

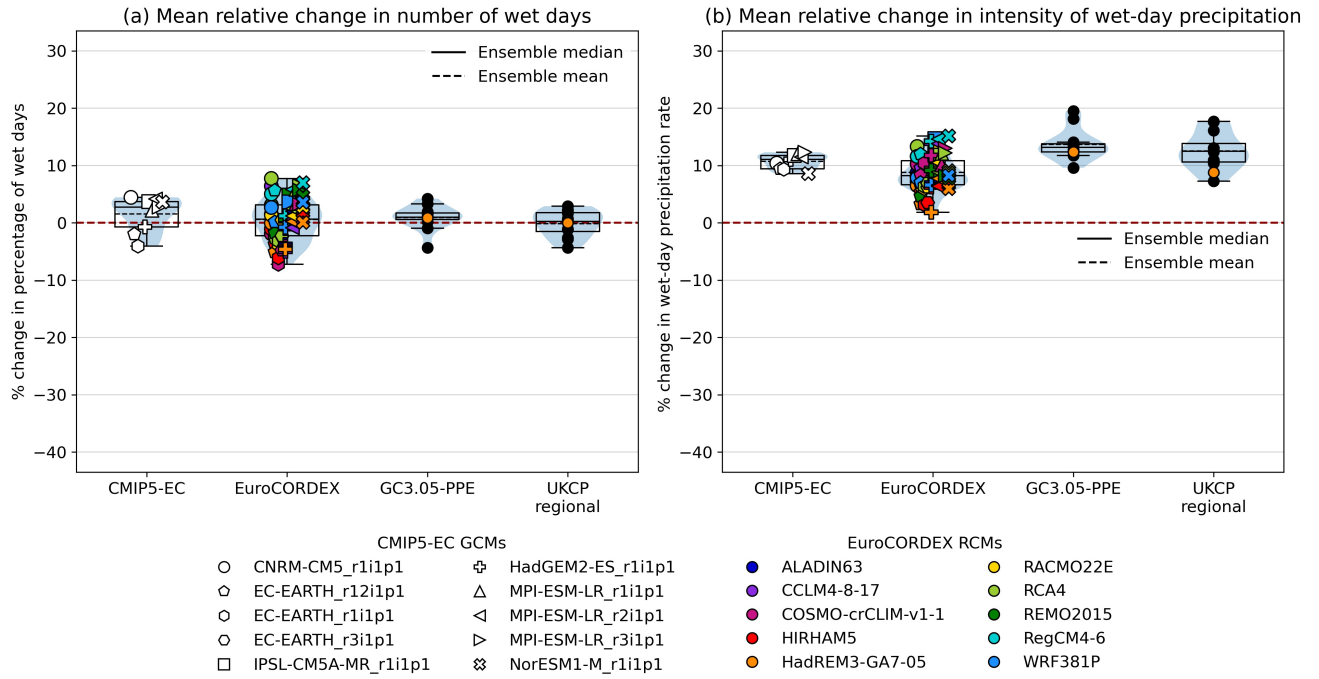


Figure S6. Boxplots showing the distribution of relative changes in UK-averaged number of wet days and intensity of wet-day precipitation during the winter months between the reference period (1981—2010) and the future period (2050—2079). For details of the plot elements see the caption to Figure 4 in the main text.

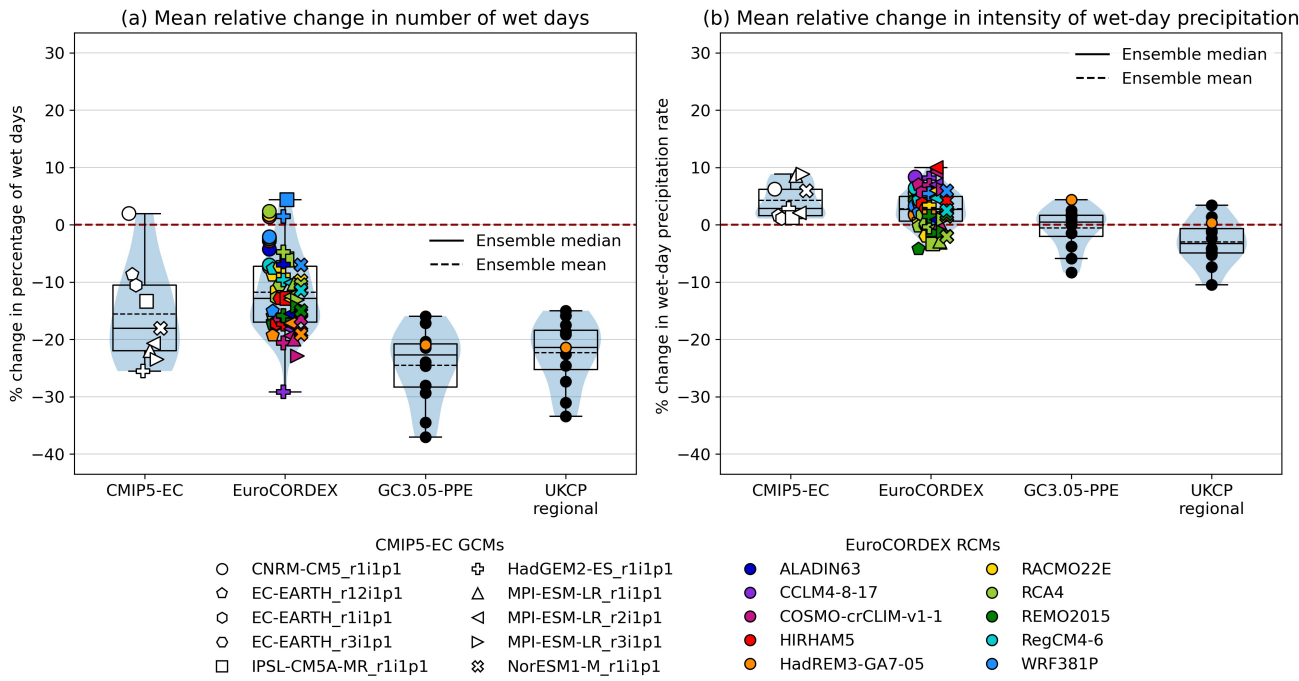


Figure S7. Boxplots showing the distribution of relative changes in UK-averaged number of wet days and intensity of wet-day precipitation during the summer months between the reference period (1981—2010) and the future period (2050—2079). For details of the plot elements see the caption to Figure 4 in the main text.