

Nivolumab-induced acute tubular injury-A case report

We would like to submit the enclosed manuscript entitled "Nivolumab-induced acute tubular injury: a case report", which we wish to be considered for publication in Clinical Case Reports

We reported a rare case of nivolumab-induced ATI. A kidney biopsy is essential to exclude other possibilities such as interstitial nephritis or associated glomerular diseases. LTT is a useful tool to identify the possible culprit in spite of not being able to reveal the result in real time. It is important to note that, in patients with limited choice for ICI reuse, culprit medication associated with ICI-related nephrotoxicity should be avoided.

The work described has not been submitted elsewhere for publication, in whole or in part, and all the authors listed have approved the manuscript that is enclosed.

I have read and have abided by the statement of ethical standards for manuscripts submitted to Clinical Case Reports

Authors' names, qualifications and the department(s)

First Author : Hui-Hsin Yang, BD1

Co- Author Chia-Wen Chang, MD1

Corresponding author: Tai-Di Chen, MD2

Authors' Affiliations:

1. Department of Pharmacy, Chang Gung Memorial Hospital, Taoyuan
2. Department of Nephrology, Chang Gung Memorial Hospital, Linkou

Address for Correspondence:

No. 5, Fuxing St., Guishan Dist., Taoyuan City 333, Taiwan (R.O.C.)

E-mail: 8902028@cgmh.org.tw

TEL: +886-(03)3281200-2719

Address for First Author :

No. 123, Dinghu Rd., Guishan Dist., Taoyuan City 333 , Taiwan (R.O.C.)

E-mail: monica6274@gmail.com

TEL: +886-(03)3196200-2016

Address for Co-Author:

No. 123, Dinghu Rd., Guishan Dist., Taoyuan City 333 , Taiwan (R.O.C.)

E-mail: a8b0c7d24@gmail.com

TEL: +886-(03)3196200-2018

Abstract

Background: Nivolumab belongs to immune checkpoint inhibitors (ICIs). ICIs-induced kidney injury is rare and acute interstitial nephritis (AIN) is the majority.

Case presentation: A 58-year-old woman had gastric cancer treated with nivolumab. Her serum creatinine (Cr) increased to 5.94 mg/dL post two cycles of nivolumab and co-administered with acetaminophen. A kidney biopsy showed acute tubular injury (ATI). Nivolumab rechallenge was done and Cr worsened again. The lymphocyte transformation test (LTT) indicated a strong positive for nivolumab.

Conclusion: Although rare, ATI due to ICIs could not be ruled out, and LTT is a tool to identify the culprit.

Keywords: Nivolumab; acute tubular injury; lymphocyte transformation test

Nivolumab-induced acute tubular injury

Background

Nivolumab belongs to ICIs. Among many immune-related adverse events (IRAEs) due to ICIs, IRAE nephritis is around 1%¹. Kidney biopsies of ICIs-induced nephritis show that the most common histological feature is AIN. Once IRAEs develop, corticosteroids are the drug of choice.

Case presentation

A 58-year-old post-menopausal female was diagnosed with right breast cancer (invasive ductal carcinoma), ER:(3+,90%), PR:(3+,2%), HER-2: [1+], KI-67:15% (Luminal B), stage I (T1cN0M0) in May 2016. She received partial mastectomy on May 26, 2016. She kept on adjuvant hormone therapy with Tamoxifen after operation. Synchronous stage IV gastric adenocarcinoma with ovarian metastasis and peritoneal carcinomatosis (T3N2M1) was diagnosed in July 2016. Systemic chemotherapy with XELOX and FOLFORI was administrated until September 2017. Ovarian metastatic tumors progression and bone metastasis were noted in September 2017. Laparotomy with bilateral salpingo-oophorectomy and partial omentectomy were performed on October 17, 2017. Palliative systemic therapy with Nivolumab (3mg/kg) was initiated on November 24, 2017. The second cycle was given on December 11, 2017, and her Cr level was 0.91 mg/dl before nivolumab initiation and 0.74 mg/dl before the second cycle of immunotherapy.

The patient was found to have acute kidney injury (AKI) with a Cr level of 3.11 mg/dL on December 22 through pre-chemotherapy lab survey, after two cycles of nivolumab. (Fig. 1) Other biochemical panels revealed sodium 141mEq/L, potassium 5.1mEq/L, blood urea nitrogen (BUN) 57.9 mg/dL, total protein 7.1g/dL, and albumin 4.09g/dL. Urinalysis showed 3+ (300 mg/dL) for protein and 3+ for hemoglobin. On microscopic examination, there were 306 red blood cells and 33 white blood cells. After hospitalization, intravenous fluid was applied under the impression of dehydration. Obstructive uropathy was also suspected, and urologist was consulted. Follow up lab survey on December 25 showed AKI in progression. The Cr level elevated to 5.94 mg/dL and BUN was 83.9mg/dL. Fraction excretion was 5.94%. The kidney echo revealed bilateral moderate hydronephrosis, status post bilateral double J catheters insertion.

IRAE in kidney was suspected in the presence of proteinuria and hematuria.

Methylprednisolone (1 mg/kg/day) was applied for suspected IRAE nephritis on

December 25, 2018 (Fig. 1) Meanwhile, LTT was conducted on the next day but the results were only available after one month while renal biopsy was performed on December 28. The histological finding of renal biopsy showed ATI. No crescent, segmental sclerosis, necrosis, nor thrombus was found.

Interstitium shows focal and mild inflammation composed of mononuclear cells. Tubulointerstitial fibrosis is less than 5%. The Immunofluorescence study showed negative stains for IgG, IgA, IgM, C3, C1q, and kappa and lambda light chains. Reported findings in IRAE nephritis such as tubulointerstitial nephritis, immune complex glomerulonephritis, or thrombotic microangiopathy are not seen. (Fig. 2) One month later, LTT showed strong positive for nivolumab (Table 1).

Traced the patient's medication use, she had received acetaminophen (Non-Steroidal Anti-Inflammatory Drug , NSAID) from 2017 12/20-24 for pain control which may contribute to her renal impairment as the Cr level showed an increase. (Fig. 1) After discussing with the nephrologist, NSAIDs related acute tubular nephropathy was preferred.

We discontinued acetaminophen on December 24, 2017 and keep methylprednisolone 40mg twice daily. The patient's renal function improved rapidly. Cr level was 1.16 mg/dL and BUN was 31.3 mg/dL on January 1, 2018. We discontinued methylprednisolone on January 2, 2018. Third cycle of immunotherapy with Nivolumab was re-initiated on January 4, 2018. The patient denied any discomfort after immunotherapy and she was discharged on January 8, 2018.

At fourth cycle immunotherapy on January 18, 2018, impaired kidney function was noticed again. The Cr level was 2.0 mg/dL and BUN was 44.6 mg/dL. She denied urine output decreased, dysuria or back pain. We hold the 4th immunotherapy and readmitted the patient for further treatment. Nephrologist was consulted and immunotherapy related IRAE was considered. Therefore, methylprednisolone 60mg QD(1mg/kg) was prescribed from February 1, 2018 to February 7, 2018. The patient's renal function improved gradually. (Fig. 1) The Cr level returned to 1.17 mg/dL on February 7, 2018, and we tapered methylprednisolone to 40mg QD. Under stable condition, the patient was discharged on February 12, 2018. She received methylprednisolone 4mg/tab QD at our OPD. Her renal function remained stationary under treatment.

Discussion

We encountered a case of ATI induced by nivolumab for the treatment of gastric cancer. ICIs are a new category of immunotherapy against several malignancies. Various organ systems can be affected by IRAEs. Although the incidence of ICI-related

AKI is relatively rare (2-5%) compared to other organs². An increased number of reports on ICI-induced kidney injuries has been observed in recent years. Cortazar et al reported that the overall incidence of AKI was 2.2% among a total of 3,695 patients treated with ICI monotherapy³.

The types of nephropathies caused by the ICI class vary enormously even when induced by a single agent such as nivolumab. Cortazar et al described the histologic features with ICI-associated nephrotoxicity in patients who receive kidney biopsy³. AIN was the most common pathologic lesion encountered³. Similarly, Shirali et al described the histologic features of ICI-induced AKI in 6 lung cancer patients who all had AIN⁴. Omar et al reported 16 cases of nephrotoxicity linked to ICI therapy, and the most common pathological finding is ATN¹. In addition, AIN can frequently co-occur with other forms of glomerular pathologies injury including MCD, MN, IgA nephropathy, pauci-immune glomerulonephritis, and lupus-like glomerulonephritis⁵⁻⁷. AIN pattern on kidney biopsies seems to be the predominant histological character of renal complications in IRAEs. However, our case proved to be ATI. The clinical manifestation of AIN is similar to ATI, but AIN has a more hidden onset while ATI arises from direct tubular epithelial injury with rapid deterioration of renal function^{8,19}.

The median time from ICI start to AKI is variable. In the patient of our case, the time relapsed from the initial exposure to nivolumab plus longer half-life acetaminophen until the onset of AKI was 30 days. This delayed response is in line with the observations of a case series of 13 patients with ICI-induced AKI, in which the median time from initiation of an ICI to AKI was 91 days (range: 21-245 days)^{3,9-11}. The heterogeneous and delayed onset of AKI implies that the mechanistic pathway is distinct from the typical drug-induced hypersensitivity reaction. ICIs-induced AIN may be due to “reprogramming” of the immune system, leading to the loss of tolerance against endogenous kidney antigens, as opposed to a delayed-type hypersensitivity reaction^{3,12-13}. This might be why some of the cases had a long latency period time before AIN occurred.

Our patient had received short-acting NSAIDs without causing abnormal renal function before this incident. The use of long-acting acetaminophen during nivolumab therapy may result in increased nephrotoxicity according to the longer half-lives. After our patient had experienced a second treatment of nivolumab (3 mg/kg) 160mg and acetaminophen 90mg, the serum Cr surge from 0.91 mg/dL to 5.94 mg/dL compared to nivolumab alone (Naranjo score =6). According to the severity of nephrotoxicity

provided by KDIGO guidelines, our patient belongs to stage 3 AKI (serum Cr: 3.0 times baseline, or ≥ 4.0 mg/dL, or urine output: <0.3 mL/kg/h for ≥ 24 h, or anuria for ≥ 12 h)¹⁴. It is highly suspect that exposure to NSAIDs is a risk factor that may be associated with AKI. We strongly speculate that programmed death-1 inhibitor (Anti PD-1) therapy may have disrupted long-standing tolerance of NSAIDs by modulating peripheral immune tolerance for the drugs that had been safely used previously in our patient, resulting in clinically significant nephrotoxicity.

As we know, anti-PD-1 therapy may drive an autoimmune variant of interstitial nephritis, similar to the induction of autoimmune diabetes, possibly mediated by the loss of peripheral tolerance to self-reactive T cells^{12,15}. The disruption of PD-1 signaling might also break tolerance to drug-specific effector T cells that are critical to the pathogenesis of AIN^{12,16}. In this scenario, anti-PD-1 therapy reactivates exhausted drug-specific T cells primed by exposure to nephritogenic drugs, including PPIs (proton pump inhibitors) and NSAIDs but subsequently inhibited by PD-1 signaling. Either scenario resulted in increased effector T-cell migration and function, leading to clinically significant renal injury. This hypothesis is based on Cortazar et al. report that 14 out of 19 acute tubulointerstitial nephritis patients³ while using ICIs, combined suspected drugs such as PPIs and NSAIDs. Medications such as PPIs, NSAIDs, and antibiotics are an important cause of AIN on their own and have been very commonly reported as concomitant drugs in patients who develop ICI-related AIN resulting in shorter progression-free survival and overall survival¹⁷. Among patients diagnosed with ICI-related kidney injury, 69% were provided combination therapy, including antibiotics (9%), NSAIDs (22%), or PPIs (54%)¹⁸⁻¹⁹. Therefore, we believe that the patient's ICI-induced AKI is highly related to the combinational use of other medications and that the presentation of AKI may not be AIN but other possible manifestations.

Our therapeutic approach included the discontinuation of the possible offending agent (nivolumab, acemetacin) and daily administration of systemic corticosteroids for IRAEs according to guidelines. After 5 days of treatment, serum Cr dropped. Current guidelines for ICI-induced AKI are formulated by the Society for Immunotherapy of Cancer per Common Terminology Criteria for Adverse Events (CTCAE version 5.0)²⁰. For persistent grade 2 (doubling of Cr or higher), the guidelines recommend discontinuing ICIs. They also recommend a corticosteroid taper that begins when Cr improves to grade 1 or below². The guidelines from the National Comprehensive Cancer Network specify a starting dose and duration for the corticosteroid taper: 0.5-1 mg/kg/day for grade 2 and 1-2 mg/kg/day for grade 3 AKI with the dose being tapered

over 4-6 weeks after Cr decreases to less than or equal to grade 1^{2,21}. In the scenario of ICI-induced AKI, there are currently no rechallenge guidelines to come after. In the study from Cortazar et al, only 22% of patients with stage 2 or 3 AKI were rechallenged; only 23% of rechallenged patients occurred in recurrent ICI-induced AKI; of those with recurrent AKI, all but one responded to the second course of glucocorticoids^{18,22-23}. The latency period for ICI-related AKI after retreatment was shorter than during first use, all but 1 patient achieved complete or partial recovery of renal function after rechallenge. In contrast, Meraz-Munoz et al. have reported a 12.5% recurrence rate²⁴.

In our case, after the third cycle of nivolumab in the condition without NSAIDs involved, renal function relapse occurred, giving a Cr level of 2.0 mg/dL. (Naranjo score =7) In comparison, the second cycle of nivolumab given with acetaminophen showed a Cr level of 5.94 mg/dL. Therefore, we highly suspect that acetaminophen might play a role in causing AKI.

However, our case report has several limitations. First, LTT for acetaminophen was not performed before nivolumab therapy. Thus, it is not known whether nivolumab therapy altered the patient's immunological tolerance against acetaminophen. LTT results for suspicious drugs are required to clarify the pathophysiology of AKI. Second, the LTT detection time for nivolumab takes 3 weeks, and IHC staining is not promptly in progress. Therefore, it might delay a better understanding of the pathophysiology and etiology behind the renal disease associated with ICIs. Third, we do lack baseline urinalysis before the use of ICI and therefore cannot completely exclude the presence of underlying renal pathologies prior to ICI use. Finally, considering the half-life of nivolumab in the human body (12 to 20 days) and the decline in renal function appears to be related to the dose and duration of exposure to NSAID, it is uncertain the causal relationship between ICI and concomitant medications known to cause ATN.

In summary, acetaminophen (an NSAID)-induced ATI was highly suspected initially. However, according to the LTT and nivolumab rechallenge results, we strongly speculated that nivolumab (an ICI) may contribute to ATI formation. From the literature review, cases of ICIs-induced ATI had been found as well¹. We should give scrupulous attention to nivolumab treatment in a case with co-administered NSAIDs.

Conclusion.

We reported a rare case of nivolumab-induced ATI. A kidney biopsy is essential to exclude other possibilities such as interstitial nephritis or associated glomerular diseases. LTT is a useful tool to identify the possible culprit in spite of not being able to reveal the result in real time. It is important to note that, in patients with limited choice for ICI reuse, culprit medication associated with ICI-related nephrotoxicity should be avoided.

List of abbreviations

immune checkpoint inhibitors (ICIs), acute interstitial nephritis (AIN), serum creatinine (Cr), acute tubular injury (ATI), The lymphocyte transformation test (LTT), immune-related adverse events (IRAEs), acute kidney injury (AKI), blood urea nitrogen (BUN) Non-Steroidal Anti-Inflammatory Drug (NSAID), programmed death-1 inhibitor (Anti PD-1), proton pump inhibitors (PPIs), Cancer per Common Terminology Criteria for Adverse Events (CTCAE)

Declarations:

Ethics approval and consent to participate

Written informed consent was obtained from individual

Consent for publication

Not applicable.

Acknowledgement

The grant was supported by Chang Gung Memorial Hospital

Competing interests

All authors have no financial or other conflicts of interest

Authors' contributions

Hui-Hsin Yang was a major contributor in writing the manuscript. Tai-Di Chen performed the histological examination of the kidney. Chia-Wen Chang organized the patient data. All authors read and approved the final manuscript.

Reference

1. Omar M, Selamet U, Machado S, et al. Nephrotoxicity of immune checkpoint inhibitors beyond tubulointerstitial nephritis: single-center experience. *J Immunother Cancer*. 2019; 7 Suppl 1:2.
2. Seethapathy H, Herrmann SM, Sise ME. Immune checkpoint inhibitors and kidney toxicity: Advances in diagnosis and management. *Kidney Med*. 2021; 3,

1074- 1081.

3. Cortazar FB, Marrone KA, Troxell ML, et al. Clinicopathological features of acute kidney injury associated with immune checkpoint inhibitors. *Kidney Int.* 2016; 90 Suppl 3: 638- 647.
4. Shirali AC, Perazella MA, Gettinger S. Association of acute interstitial nephritis with programmed cell death 1 inhibitor therapy in lung cancer patients. *Am J Kidney Dis.* 2016; 68: 287- 291.
5. Muñoz AM, Amir E, Ng P, et al. Acute kidney injury associated with immune checkpoint inhibitor therapy: incidence, risk factors and outcomes. *J Immunother Cancer.* 2020; 8 Suppl 1: e000467.
6. Izzedine H, Mathian A, Champiat S, et al. Renal toxicities associated with pembrolizumab. *Clin Kidney J.* 2019; 12: 81- 88.
7. Kitchlu A, Fingrut W, Avila-Casado C, et al. Nephrotic Syndrome with cancer immunotherapies: A report of 2 Cases. *Am J Kidney Dis.* 2017; 70: 581- 585.
8. Pauksakon P, Fogo AB. Drug-induced nephropathies. *Histopathology* 2017; 70: 94–108.
9. Georgianos PI, Vaios V, Leontaridou E, et al. Acute interstitial nephritis in a patient with non-small cell lung cancer under immunotherapy with nivolumab. *Case Rep Nephrol.* 2019; 15: 3614980.
10. Perazella MA. Checkmate: kidney injury associated with targeted cancer immunotherapy. *Kidney Int.* 2016; 90 Suppl 3: 474- 476.
11. Uchida N, Tsuji S, Fujita K, et al. Nivolumab-induced severe acute kidney injury with a long latent phase in a patient with non-small-cell lung cancer: A case report. *Clin Case Rep.* 2018; 6 Suppl 11: 2185- 2188.
12. Wanchoo R, Karam S, Uppal NN, et al. Adverse renal effects of immune checkpoint inhibitors: a narrative review. *Am J Nephrol.* 2017; 45 Suppl 2:160- 169.
13. Gao L, Yang X, Cheng Yi, et al. Adverse events of concurrent immune checkpoint inhibitors and antiangiogenic agents: A systematic review. *Front Pharmacol.* 2019; 10: 1173.
14. Lameire NH, Levin A, Kellum JA, et al. Harmonizing acute and chronic kidney disease definition and classification: report of a kidney disease: Improving global outcomes (KDIGO) consensus conference. *Kidney Int.* 2021; 100 Suppl 3: 516- 526.
15. Kethireddy N, Thomas S, Bindal P, et al. Multiple autoimmune side effects of immune checkpoint inhibitors in a patient with metastatic melanoma receiving pembrolizumab. *J Oncol Pharm Pract.* 2021; 27 Suppl 1: 207- 211.
16. Raghavan R, Shawar S. Mechanisms of drug-induced interstitial nephritis. *Adv*

Chronic Kidney Dis. 2017; 24 Suppl 2: 64- 71.

17. Cortellini A, Tucci M, Adamo V, et al. Integrated analysis of concomitant medications and oncological outcomes from PD-1/PD-L1 checkpoint inhibitors in clinical practice. *J Immunother Cancer*. 2020; 8 Suppl 2: e001361.
18. Cortazar FB, Kibbelaar ZA, Glezerman IG, et al. Clinical features and outcomes of immune checkpoint inhibitor-associated AKI: a multicenter study. *J Am Soc Nephrol*. 2020; 31 Suppl 2: 435- 446.
19. Tian R, Liang J, Li R, et al. Acute kidney injury induced by immune checkpoint inhibitors. *Kidney Dis (Basel)*. 2022; 8 Suppl 3: 190- 201.
20. National Cancer Institute. Common terminology criteria for adverse events (CTCAE) version 5.0. (2017).
[https://ctep.cancer.gov/protocolDevelopment/electronic_applications/docs/CTCAE v5 Quick Reference 8.5x11.pdf](https://ctep.cancer.gov/protocolDevelopment/electronic_applications/docs/CTCAE_v5_Quick_Reference_8.5x11.pdf)
21. Schneider BJ, Naidoo J, Santomasso BD, et al. Management of immune-related adverse events in patients treated with immune checkpoint inhibitor therapy: ASCO Guideline update. *J Clin Oncol*. 2021 ;39 Suppl 36: 4073- 4126.
22. Gupta S, Cortazar FB, Riella LV, et al. Immune checkpoint inhibitor nephrotoxicity: Update 2020. *Kidney360*. 2020 ;1 Suppl 2: 130- 140.
23. Carro CG, Bolufer M, Bury R, et al. Acute kidney injury as a risk factor for mortality in oncological patients receiving checkpoint inhibitors. *Nephrol Dial Transplant*. 2022 ;37 Suppl 5: 887- 894.
24. Meraz-Munoz A, Amir E, Ng P, et al. Acute kidney injury associated with immune checkpoint inhibitor therapy: incidence, risk factors and outcomes. *J Immunother Cancer*. 2020 ;8 Suppl 1: e000467.

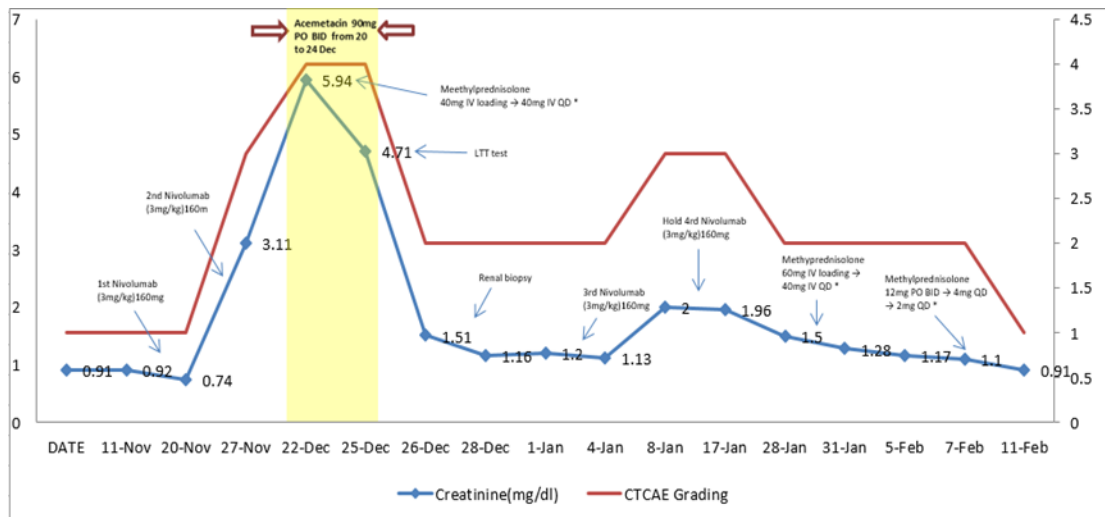


Fig. 1 The clinical course and serum creatinine change after the initiation of Nivolumab therapy

* Common Terminology Criteria for Adverse Events (CTCAE)

* Methylprednisolone was applied for suspected IRAE nephritis

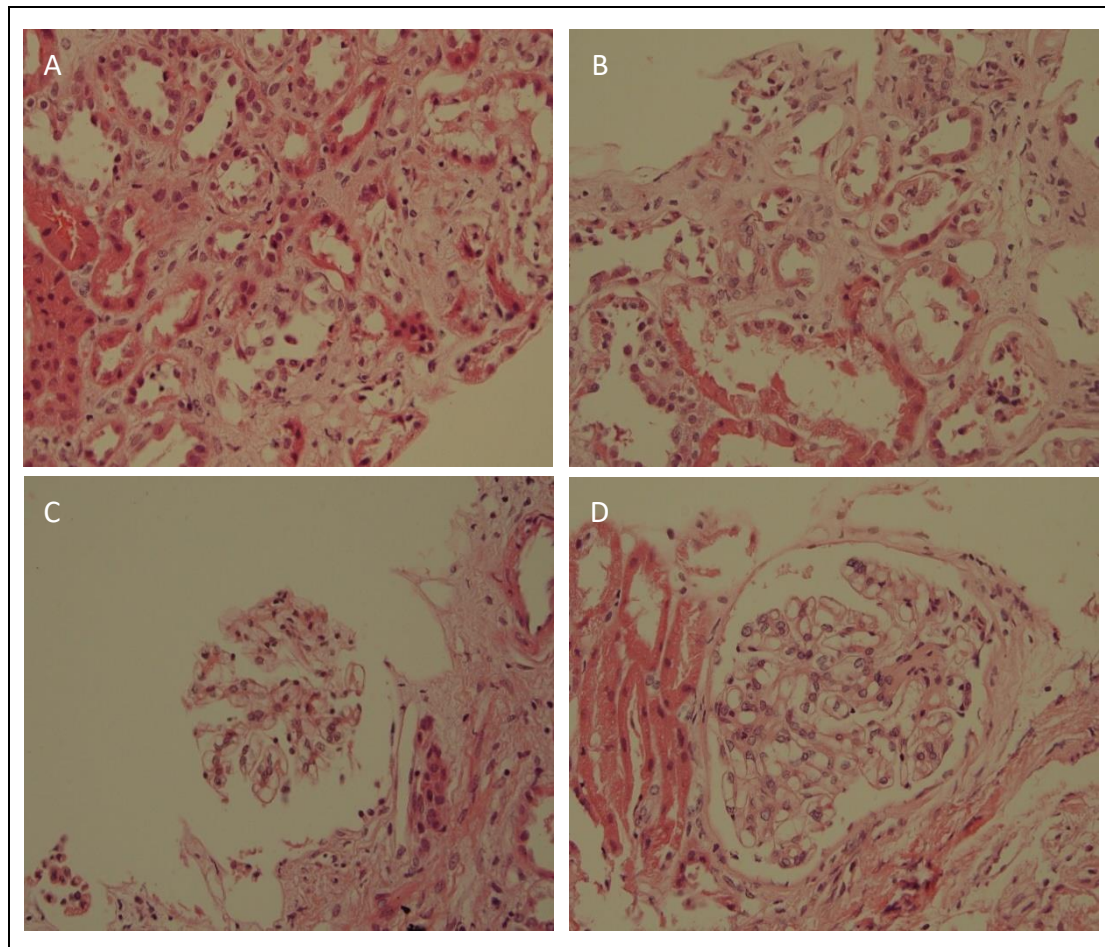


Fig. 2. Kidney biopsy showed acute tubular injury.

Tubules showed anisonucleosis, attenuation of tubular cells, and lumen dilatation.

There is no tubulointerstitial nephritis. (A B)

Glomeruli are unremarkable, and here is no immune complex mediated glomerulonephritis nor thrombotic microangiopathy. (C D)

Category	LTT test value			
	GNLY fold change	Granzyme B fold change		
			reference value	
Nivolumab	17.6	> Max	+/-	(1~1.5)
Ipilimumab	1.32	1.6	+	(1.5~2)
Pembrolizumab	2.93	105.37	++	(2~3)
PHA	3.83	2.53	+++	(>3)

Tab. 1. Lymphocyte transformation test