

A case of hypervascular tumors in the liver and pancreas: synchronous hepatocellular carcinoma and pancreatic metastasis from renal cell carcinoma 36 years after nephrectomy

Hajime Nakamura¹, Shingo Tanaka¹, Koji Miyanishi¹, Yutaka Kawano², Takahiro Osuga¹, Kazuma Ishikawa¹, Makoto Yoshida¹, Hiroyuki Ohnuma¹, Kazuyuki Murase¹, Kohichi Takada¹, Hiroshi Yamaguchi¹, Minoru Nagayama¹, Yasutoshi Kimura¹, Ichiro Takemasa¹, and Junji Kato¹

¹Sapporo Medical University

²Health Science University of Hokkaido

September 21, 2020

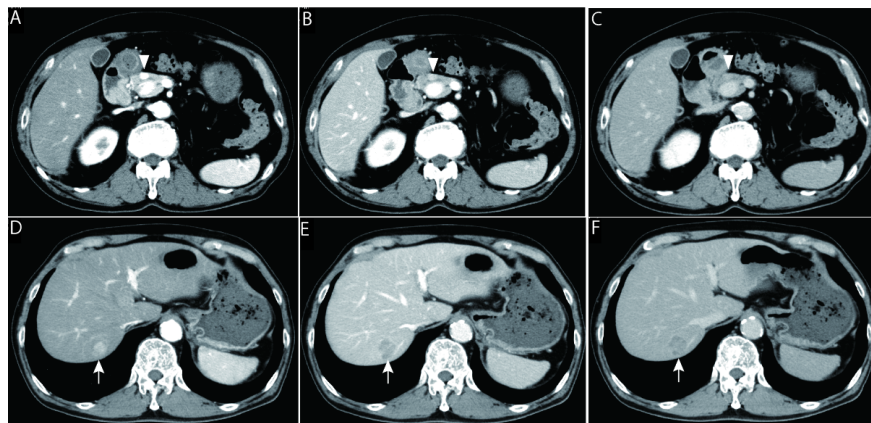
Abstract

It is sometimes difficult to distinguish between multiple cancers and metastases using only diagnostic imaging, particularly when multiple hypervascular tumors are found in multiple organs. In such cases, preoperative histological evaluation may be essential for determining the management of tumors.

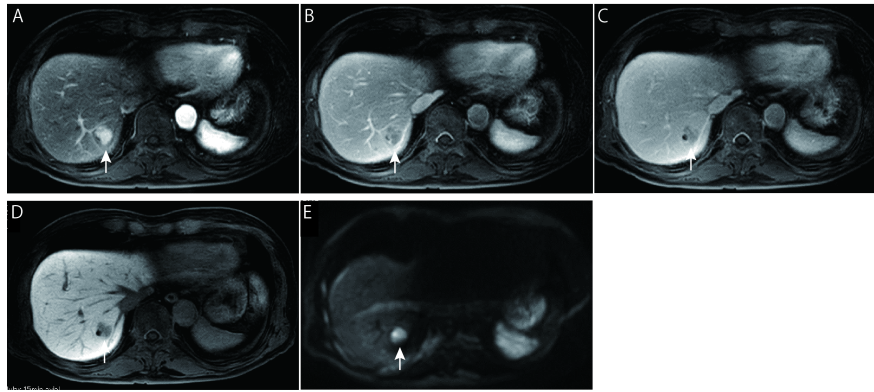
Hosted file

manuscript_CCR.doc available at <https://authorea.com/users/360542/articles/482191-a-case-of-hypervascular-tumors-in-the-liver-and-pancreas-synchronous-hepatocellular-carcinoma-and-pancreatic-metastasis-from-renal-cell-carcinoma-36-years-after-nephrectomy>

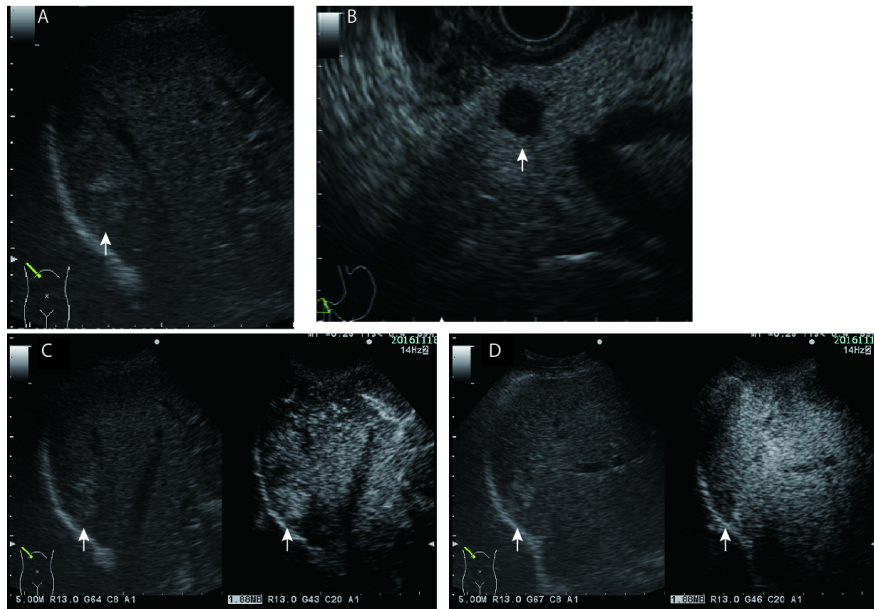
Nakamura, et al. Figure.1



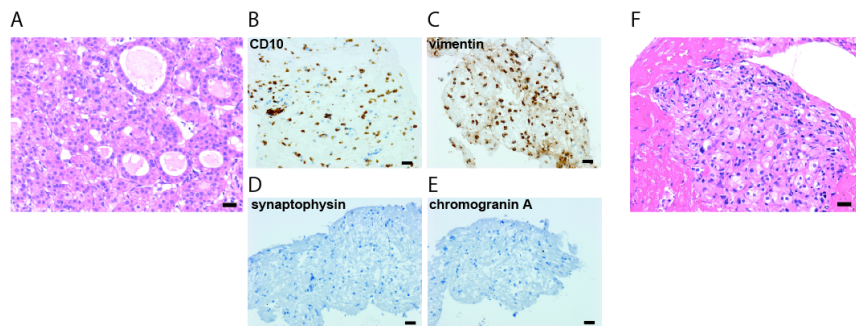
Nakamura, et al. Figure.2



Nakamura, et al. Figure.3



Nakamura, et al. Figure.4



Hosted file

Table1.docx available at <https://authorea.com/users/360542/articles/482191-a-case-of-hypervascular-tumors-in-the-liver-and-pancreas-synchronous-hepatocellular-carcinoma-and-pancreatic-metastasis-from-renal-cell-carcinoma-36-years-after-nephrectomy>